



# PILATUS PC-24 EMERGENCY AND RESCUE CARD

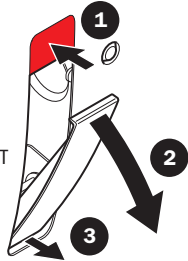


PC-24  
THE CRYSTAL CLASS

## PRODUCTION AIRCRAFT (S/N 101 AND UP)

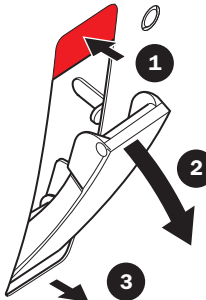
### OPENING MECHANISM OF MAIN ENTRY DOOR (STANDARD CONFIGURATION)

- 1 PRESS AND HOLD LATCH
- 2 PULL HANDLE
- 3 PULL MAIN ENTRY DOOR OUT



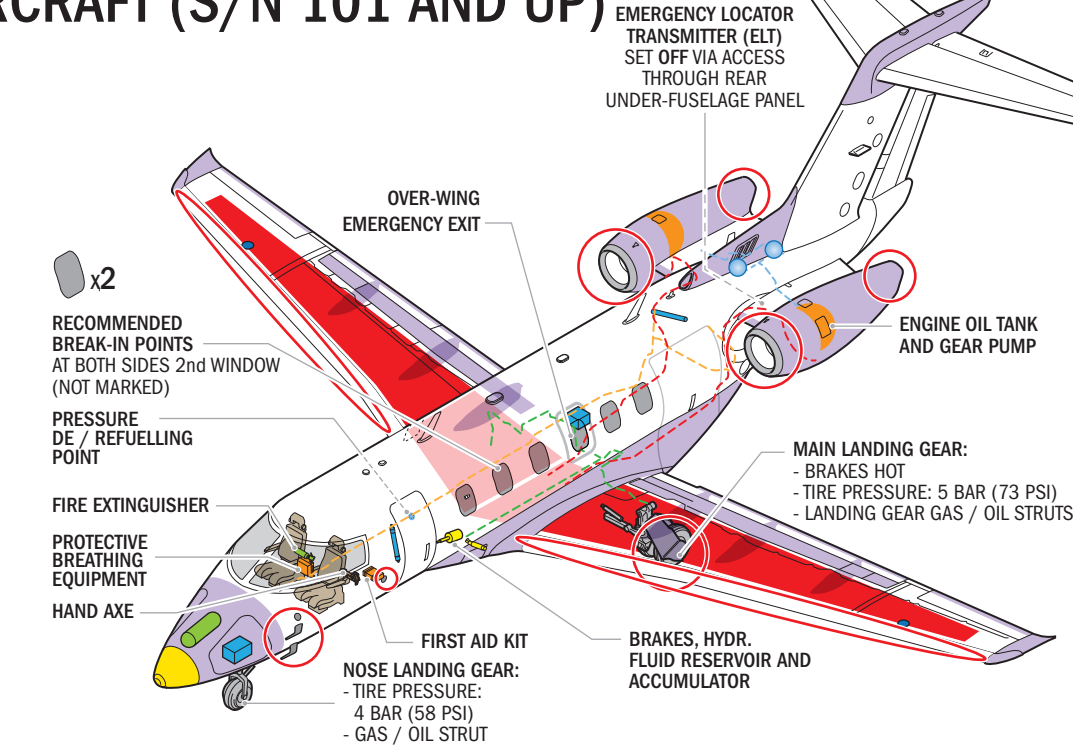
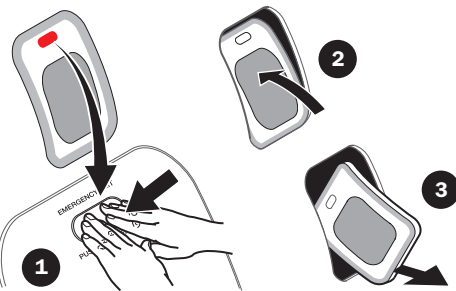
### OPENING MECHANISM OF CARGO DOOR

- 1 PRESS AND HOLD LATCH
- 2 PULL HANDLE
- 3 PULL CARGO DOOR OUT



### OVER-WING EMERGENCY EXIT OPENING PROCEDURE

- 1 PUSH BUTTON IN
- 2 PUSH EMERGENCY EXIT IN
- 3 REMOVE EMERGENCY EXIT AND DISCARD OUTSIDE



### FLIGHT DECK EMERGENCY ENGINE SHUT-OFF PROCEDURE

- 1 ENGINE SELECTORS TO OFF
- 2 CHECK IF FIRE ALARM IS INDICATED, IF NOT: SKIP STEPS 2.1 TO 2.5
- 2.1 PRESS LEFT AND / OR RIGHT FIRE BUTTON TO ISOLATE LEFT AND / OR RIGHT ENGINE
- 2.2 WAIT 5 SECONDS
- 2.3 IF FIRE REMAINS: PUSH 1 FOR LEFT OR RIGHT ENGINE FIRE EXTINGUISHING
- 2.4 WAIT 30 SECONDS TO COMPLETE EXTINGUISHING ON SAME ENGINE
- 2.5 IF FIRE REMAINS: PUSH 2 FOR LEFT OR RIGHT ENGINE FIRE EXTINGUISHING
- 3 ALL 4 ELECTRICAL SYSTEM SWITCHES TO OFF

### DANGER! HOT ZONES

- AIR DATA SENSORS
- WING LEADING EDGE
- ENGINE INTAKE LIPS
- ENGINE EXHAUST
- MAIN LANDING GEAR STEEL BRAKES

### MATERIALS

- CARBON FIBER EPOXY
- GLASS FIBER EPOXY

### SYSTEMS AND PARTS

**OIL (MOBIL JET II): ENGINE OIL TANK**  
PER ENGINE: 5.3 LITERS (1.4 US GAL)

**FUEL (JET A1 KEROSENE):**  
PER WING: 1680 LITERS (444 US GAL)

REFUELLING POINTS

PRESSURE DE / REFUELLING POINT

**OXYGEN BOTTLES:**  
MAIN OXYGEN BOTTLE  
128 BAR / 3.3 M<sup>3</sup> (1850 PSI / 115 FT<sup>3</sup>)

Ni-Cd / Li-ion BATTERIES

**ENGINE FIRE EXTINGUISHING SYSTEM**  
HALON 1301 PRESSURIZED RESERVOIR  
42 BAR / 0.8 LITERS (609 PSI / 0.03 FT<sup>3</sup>)

OIL AND GAS STRUTS FOR THE DOORS

BRAKES, HYDR. FLUID RESERVOIR AND ACCUMULATOR

FIRE EXTINGUISHER

HAND AXE

PROTECTIVE BREATHING EQUIPMENT

FIRST AID KIT

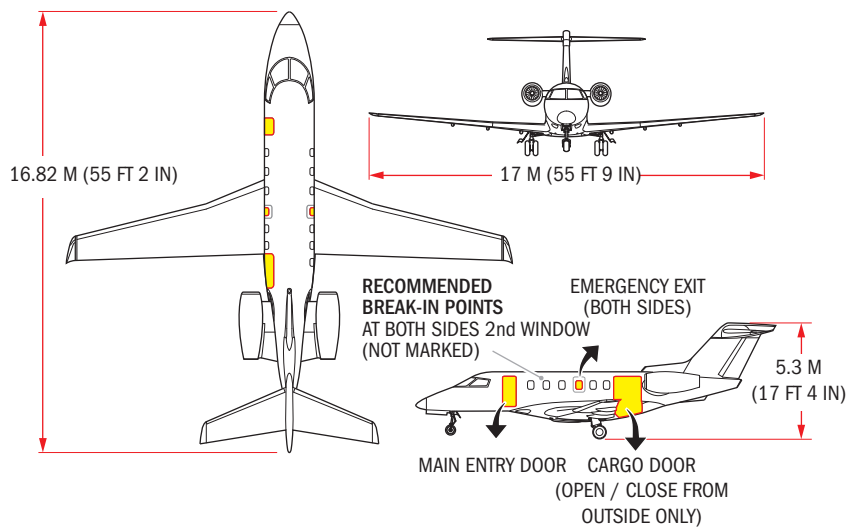
### PIPELINES

- FUEL (JET A1 KEROSENE)
- VCS COOLANT (R134A)
- FIRE EXTINGUISHING SYSTEM (HALON 1301)
- BRAKES HYDRAULIC FLUID

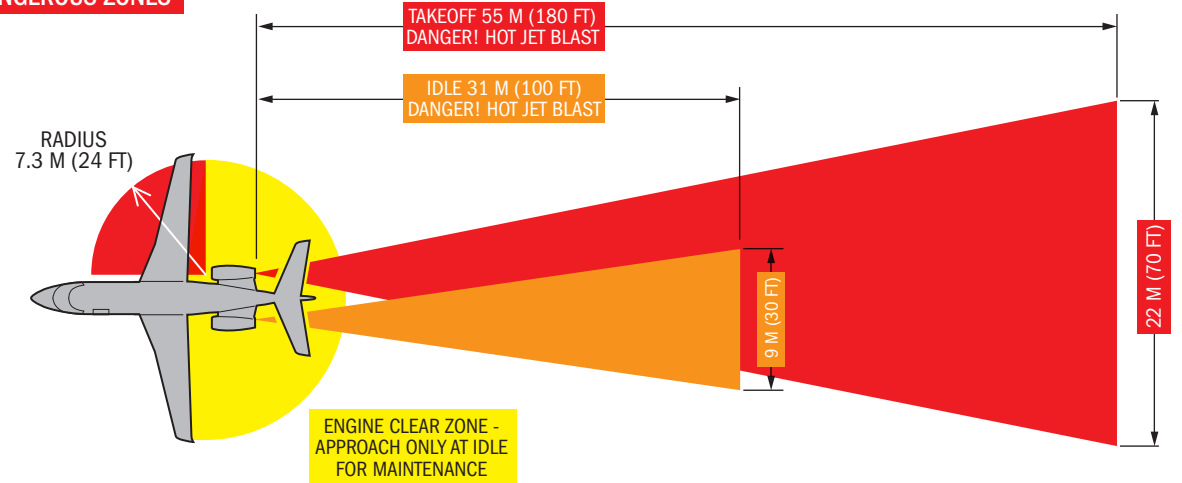
### CABIN OCCUPANTS

UP TO 10 SEATS & PASSENGERS  
(SEE CABIN CONFIGURATIONS OVERLEAF)

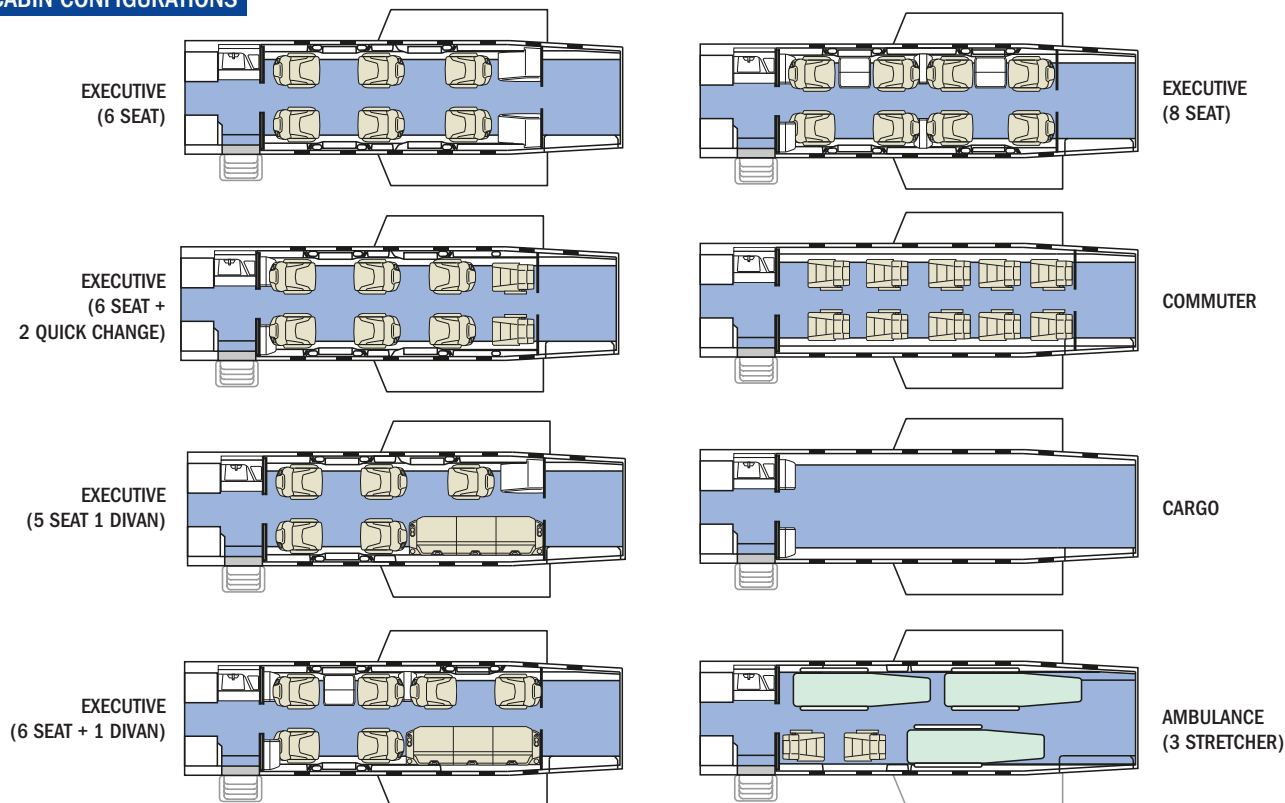
## AIRCRAFT DIMENSIONS AND ACCESS



## DANGEROUS ZONES



## CABIN CONFIGURATIONS



## GEAR DOWN AND LOCKED

PRIOR TO GOING UNDERNEATH, ENSURE LANDING GEAR IS COMPLETELY EXTENDED ONTO DEAD STOPS (PLATE-ON-PLATE)

NOSE LANDING GEAR MAIN LANDING GEAR RIGHT

