

# SERVICE LETTER

**SUBJECT: ELECTRICAL WIRING SCHEMATIC DIAGRAM CORRECTION**

To all Customers, Operators and Service Centers:

Date: May 14/09

This Service Letter is issued to draw attention to the following information:

A report has been received of an error found on electrical wiring schematic diagrams for PC-12, PC-12/45 and PC-12/47 aircraft. Affected aircraft are MSN 101 thru MSN 544 and MSN 546 thru MSN 888.

The error has been found on the electrical wiring schematic diagrams for the pilot and copilot control wheel. The wiring for trim switches S002 and S004 incorrectly show pin A as the TRIM UP function and pin C as the TRIM DOWN function. The correct wiring is pin A for the TRIM DOWN function and pin C as the TRIM UP function.

All in-service aircraft are wired correctly to pass the production and annual trim system tests.

The following wiring diagrams are affected:

MSN	Pilot Control Wheel Schematic Wiring	Copilot Control Wheel Schematic Wiring
101 thru 120	527.19.12.006 (27-10-00)	527.19.12.007 (27-10-01)
121 thru 544	527.19.12.014 (27-10-00)	-
546 thru 888	527.19.12.014 (27-10-00)	-

Operators are advised to hand amend affected existing hard copy diagrams or to use the corrected diagrams attached to this Service Letter.

Operators requiring further information on this subject, please contact one of the addresses given below:

PILATUS AIRCRAFT LTD.,  
CUSTOMER SUPPORT MANAGER,  
CH-6371 STANS,  
SWITZERLAND.

General Aviation  
Tel : + 41 41 619 6208  
Fax: + 41 41 619 7311  
eMail: SupportPC12@pilatus-aircraft.com

PILATUS BUSINESS AIRCRAFT LTD.,  
PRODUCT SUPPORT DEPARTMENT,  
11755 AIRPORT WAY,  
BROOMFIELD, CO 80021.  
USA

Tel : 303 465 9099  
Fax: 303 465 6040  
eMail: Productsupport@PilBal.com

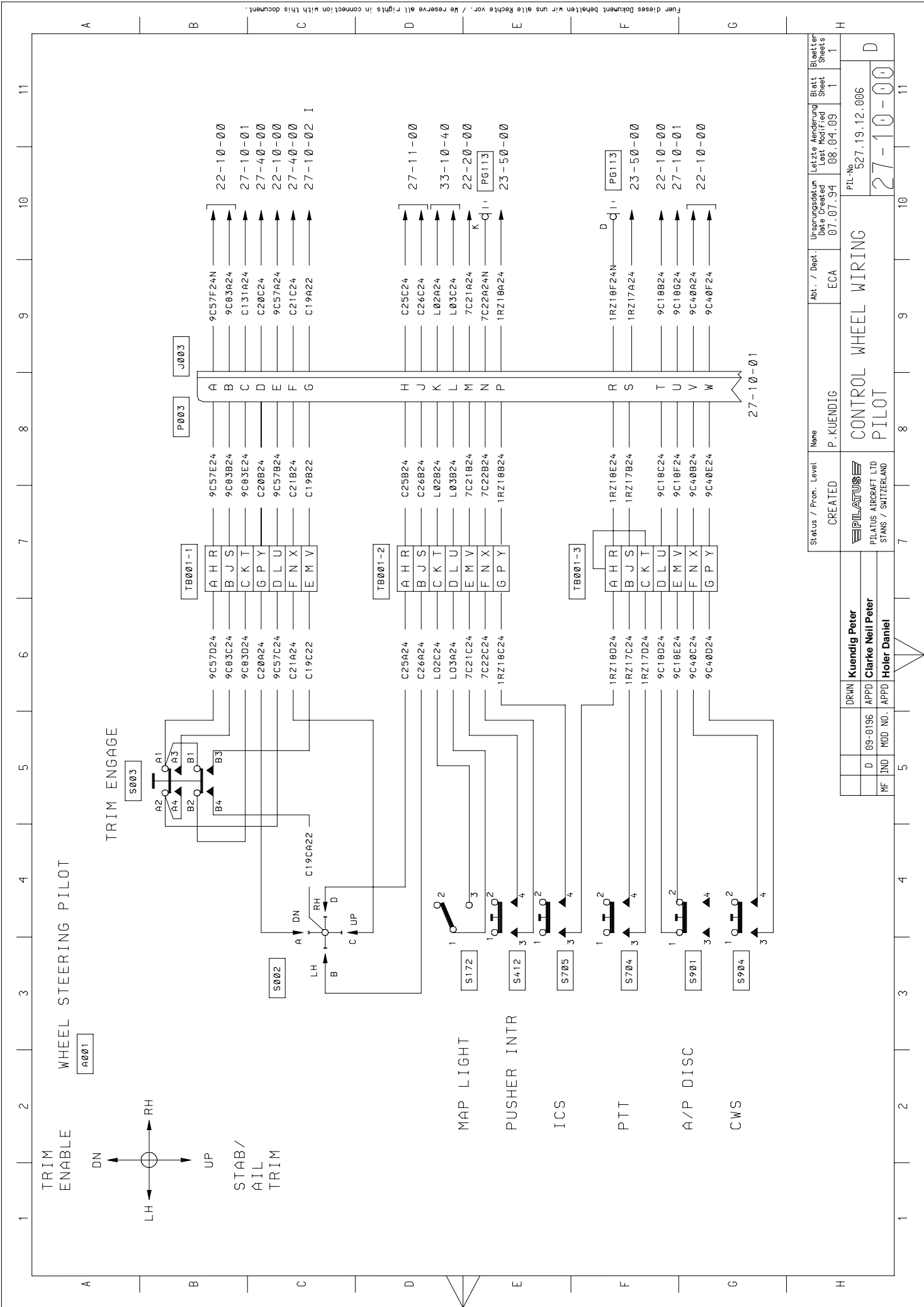
PILATUS AUSTRALIA (Pty.) LTD.,  
17 James Schofield Drive,  
Adelaide Airport SA 5950,  
AUSTRALIA

Tel : +61 (08) 8234 4433  
Fax: +61 (08) 8234 4499  
Free Call: 1800 445 007  
eMail: SupportPC12@pilatus.com.au

**Attachments: Corrected wiring diagrams 527.19.12.006, 527.19.12.007 and 527.19.12.014.**

**≡PILATUS≡**  
**PC12**  
**SERVICE LETTER**

INTENTIONALLY BLANK

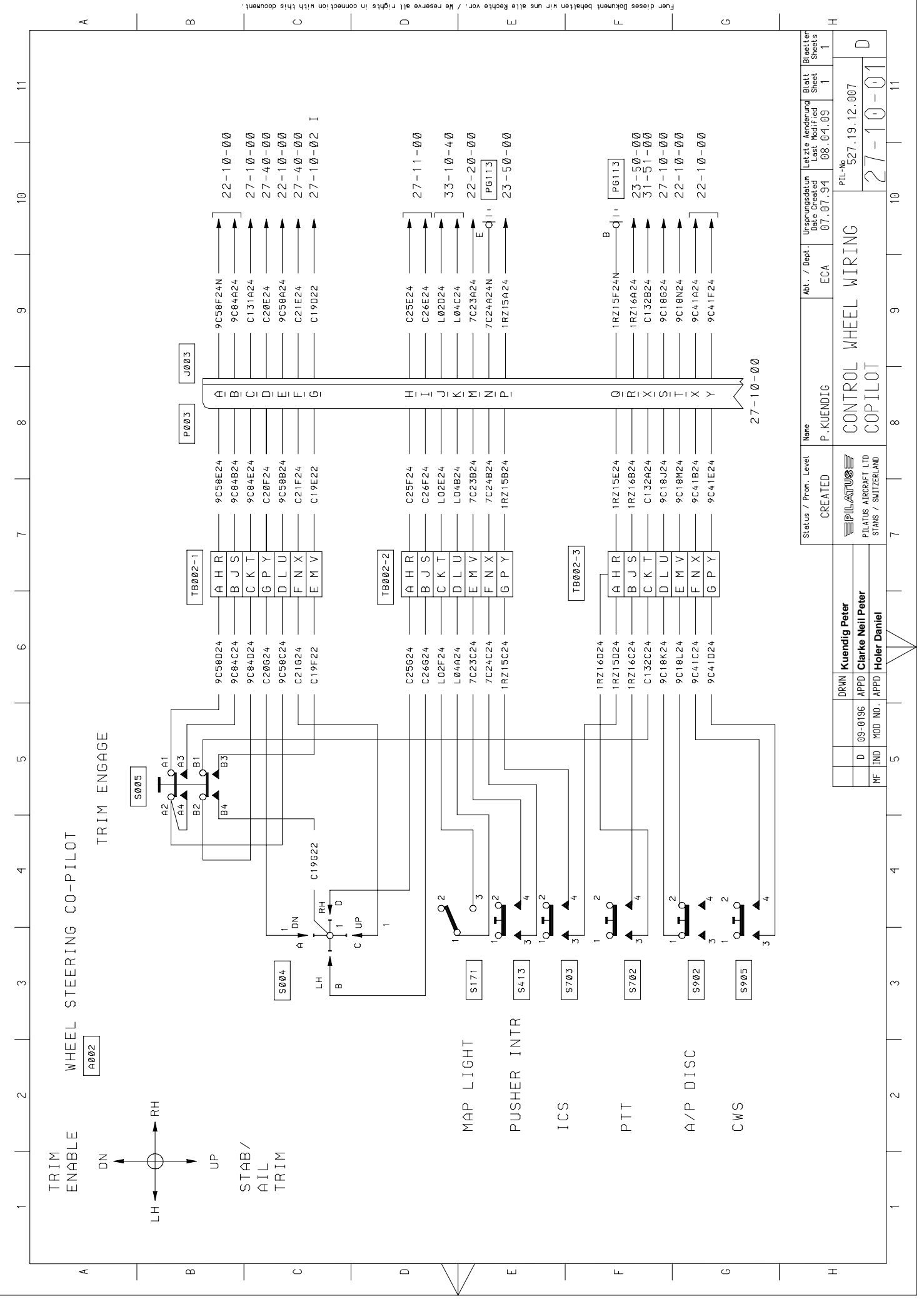


Status / Proj. Level	Name	Abt. / Dept.	Ursprungsdatum Date Created	Letzte Änderung Last Modified	Blatt Sheet	Blätter Sheets
CREATED	P. KUENDIG	ECA	07.07.94	08.04.09	1	1
PILATUS AIRCRAFT LTD STANS / SWITZERLAND		CONTROL WHEEL WIRING		PLT-NO	527.19.12.006	
DRWN <b>Kuendig Peter</b>		PILOT		27-10-00		
APPD <b>Clarke Neil Peter</b>						
APPD <b>Holer Daniel</b>						

TRIM ENABLE	DN	UP	RH	LH
MAP LIGHT	1	3	4	2
PUSHER INTR	1	3	4	2
ICS	1	3	4	2
PTT	1	3	4	2
A/P DISC	1	3	4	2
CWS	1	3	4	2

Fuer dieses Dokument behalten wir uns alle Rechte vor. / We reserve all rights in connection with this document.



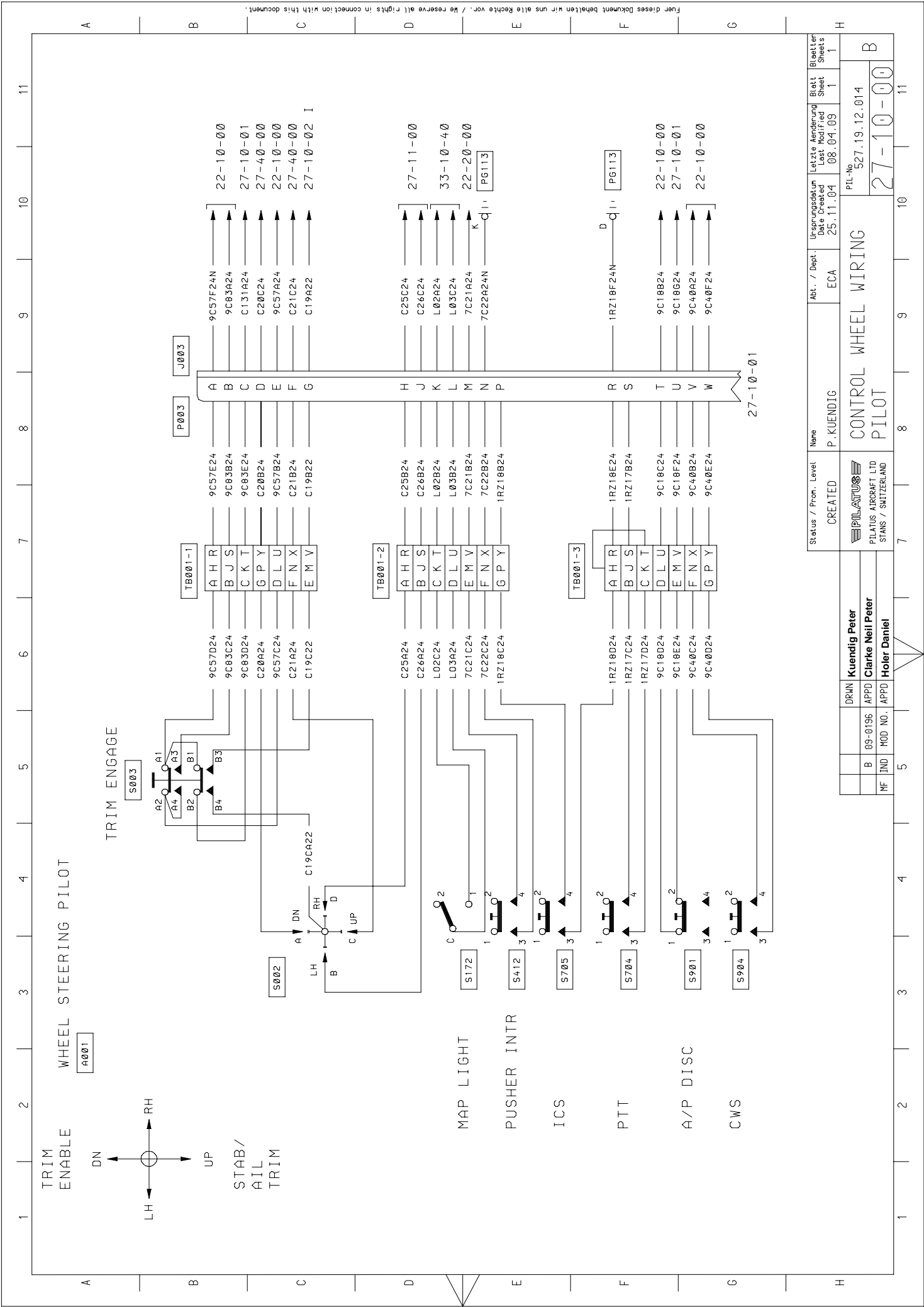


Status / Proj. Level	Name	Abt. / Dept.	Ursprungsdatum / Date Created	Letzte Änderung / Last Modified	Blatt / Sheet	Blätter / Sheets
CREATED	P. KUENDIG	ECA	07.07.94	08.04.09	1	1
<b>PILATUS</b> PILATUS AIRCRAFT LTD STANS / SWITZERLAND					PTL-No 527.19.12.007	
<b>Kuendig Peter</b> <b>Clarke Neil Peter</b> <b>Holer Daniel</b>					27-10-01	

DRWN	APPD	IND	MOD NO.	APPD
		D	09-0196	APPD
		ME		APPD

Fuen dieses Dokument behalten wir uns alle Rechte vor. / We reserve all rights in connection with this document.





Fuer dieses Dokument behalten wir uns alle Rechte vor. / We reserve all rights in connection with this document.

Status / Proj. Level	Name	Abt. / Dept.	Ursprungsdatum / Date Created	Letzte Änderung / Last Modified	Blatt / Sheet	Blätter / Sheets
CREATED	P. KUENDIG	ECA	25.11.04	08.04.09	1	1
PILATUS AIRCRAFT LTD STANS / SWITZERLAND		PIL-NO 527.19.12.014		Blatt / Sheet 27-10-00		Blätter / Sheets 11

DRWN	Kuendig Peter
B	09-0196
IND	MOD NO.
APPD	APPD
APPD	APPD
APPD	APPD

DRWN	Kuendig Peter
B	09-0196
IND	MOD NO.
APPD	APPD
APPD	APPD
APPD	APPD

CONTROL WHEEL WIRING  
PILOT